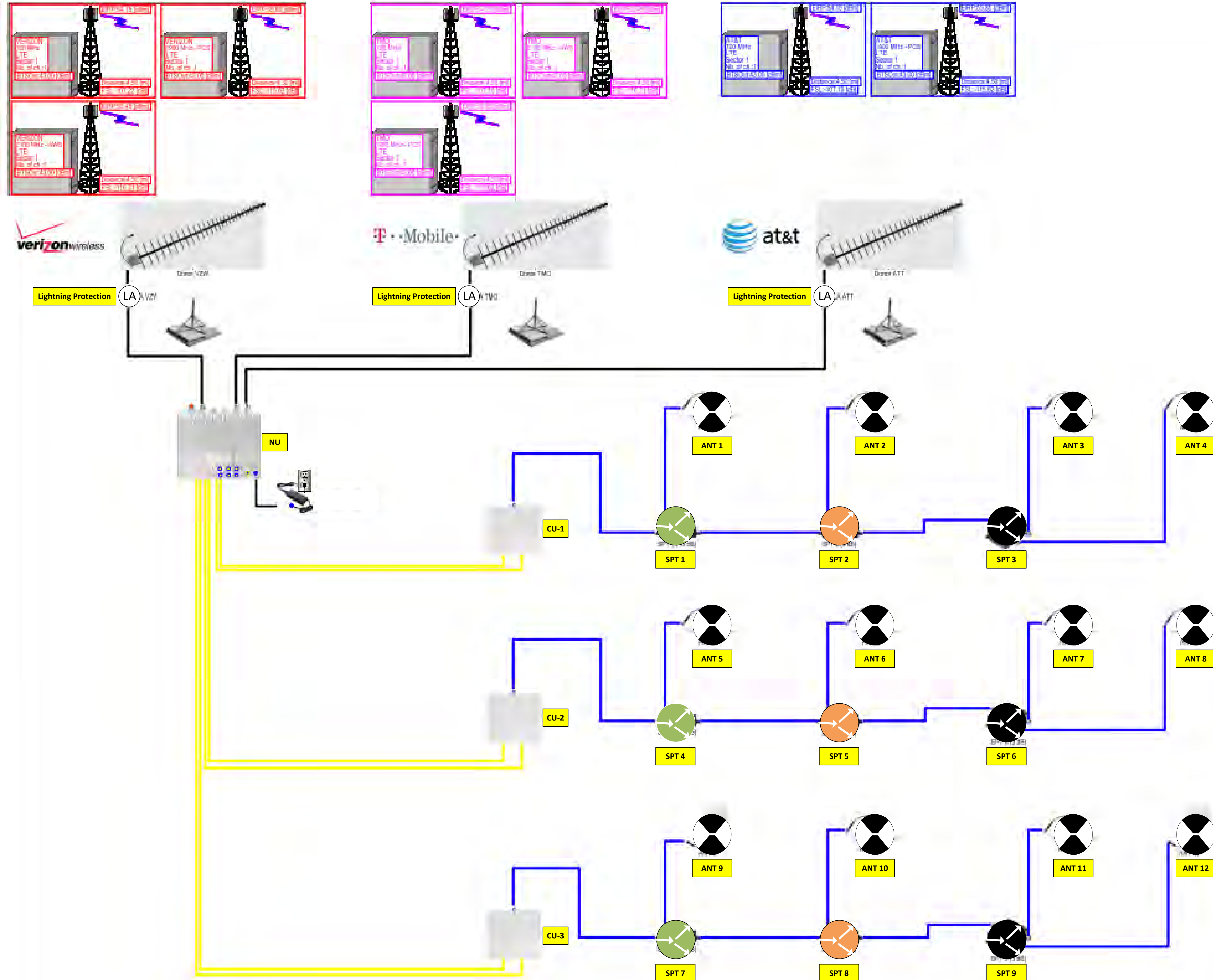


RISER DIAGRAM



EQUIPMENT LEGEND

- Donor Antenna
- Head End
- OMNI Antenna
- Coupler/Splitter (See Legend)
- Lightning Arrestor (LA)
- Directional Antenna

SPLITTER/COUPLER LEGEND

- 10 dB
- 03 dB
- 06 dB

Cables legend

- CAT-5
- ICA12-50JPLLW
- LCF12-50J



606 S. Military Trail
Deerfield Beach
FL 33442

Tel: 1-800-940-0944
Fax: 1-954-360-0986

MIDDLE SCHOOL
UNITED STATES OF AMERICA

No.	Revision/Issue	Date

Date: 11/22/2023
Dwn By: NS
Chk By: WP
Size: 36" X 24"
Scale: NOT TO SCALE
Do Not Scale Drawing

RISER DIAGRAM

Dwg: DAS 1 of 6 Rev:

FLOOR PLANS

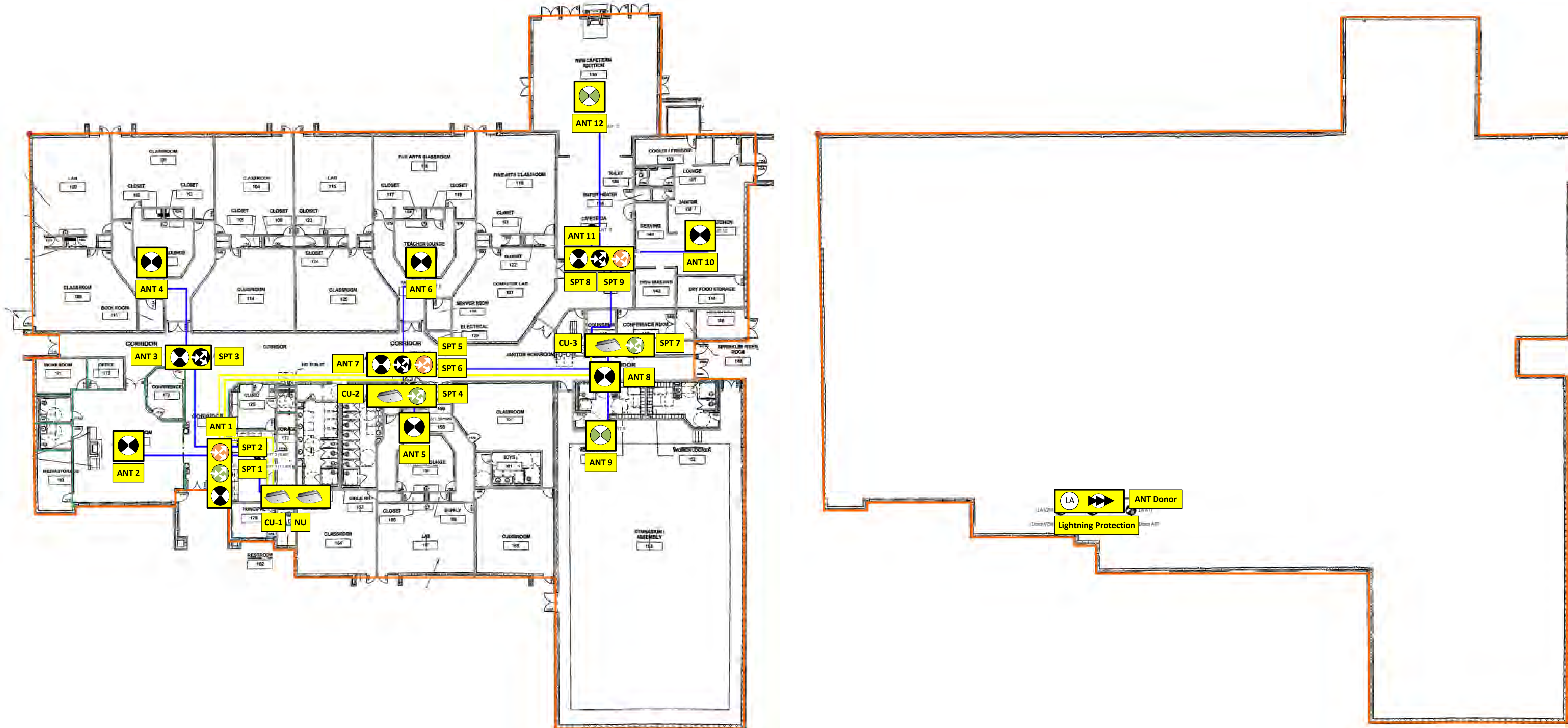


606 S. Military Trail
Deerfield Beach
FL 33442

Tel: 1-800-940-0944
Fax: 1-954-360-0986

LEVEL 1

ROOF



MIDDLE SCHOOL
UNITED STATES OF AMERICA

EQUIPMENT LEGEND

- Donor Antenna
- Coupler/Splitter (See Legend)
- HEAD
- Lightning Arrestor
- OMNI Antenna
- Directional Antenna

SPLITTER/COUPLER LEGEND

- 10 dB
- 03 dB
- 06 dB

Cables legend

- CAT-5
- ICA12-50JPLLW
- LCF12-50J

No.	Revision/Issue	Date

Date: 11/22/2023

Dwn By: NS

Chk By: WP

Size: 36" X 24"

Scale: NOT TO SCALE

Do Not Scale Drawing

FLOOR PLANS

Dwg: DAS 2 of 6 Rev:

HEAT MAPS

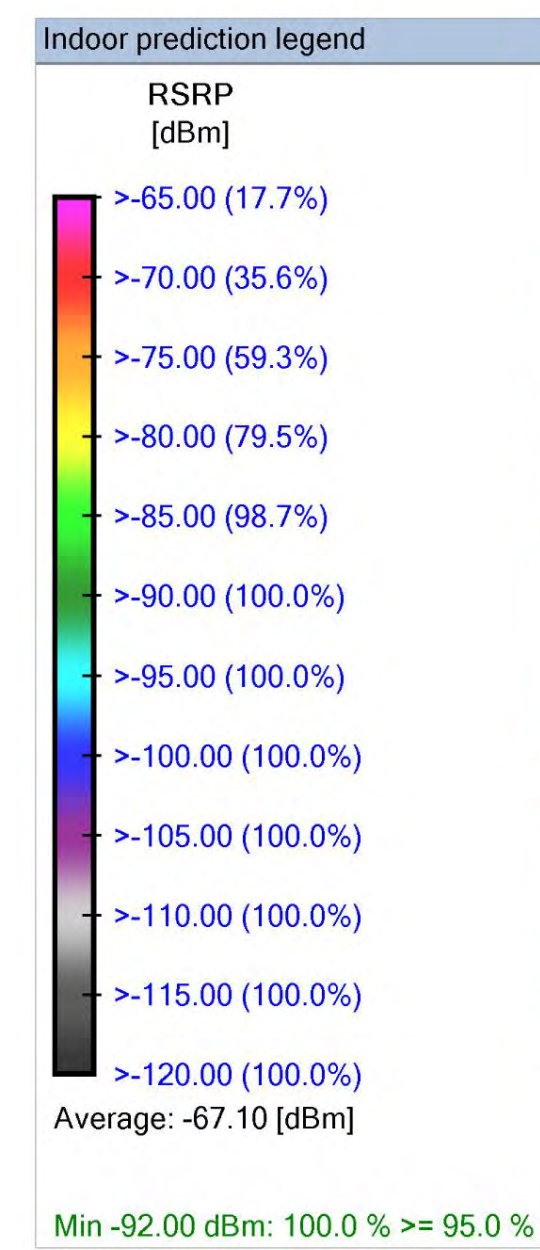
iBwave Generated Propagation



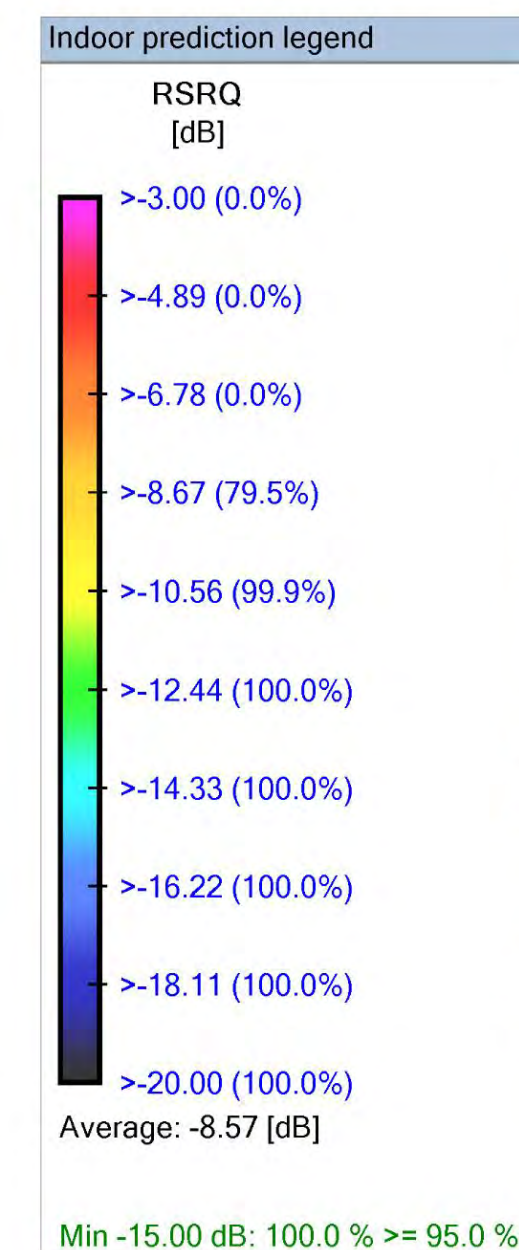
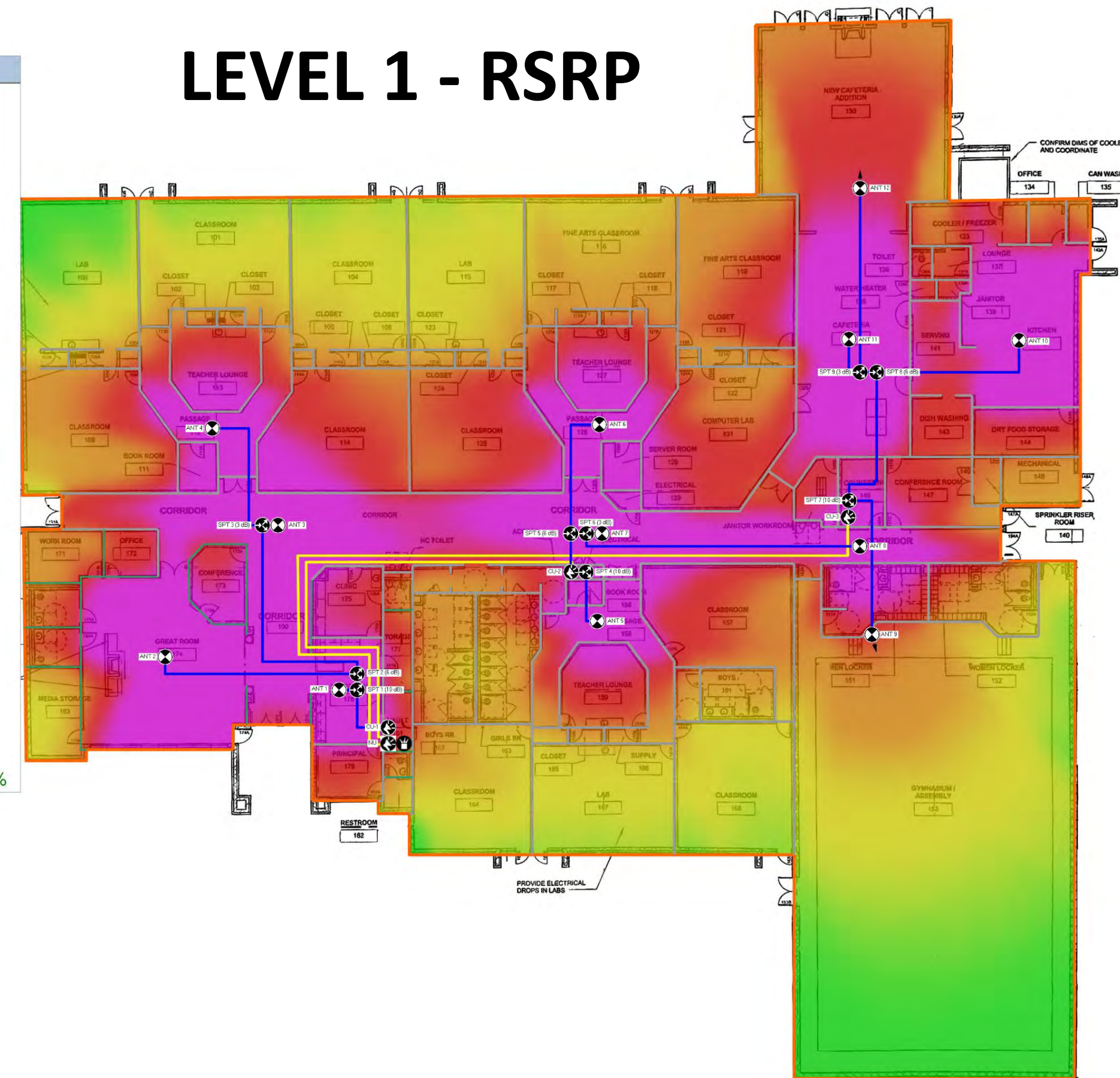
606 S. Military Trail
Deerfield Beach
FL 33442

Tel: 1-800-940-0944
Fax: 1-954-360-0986

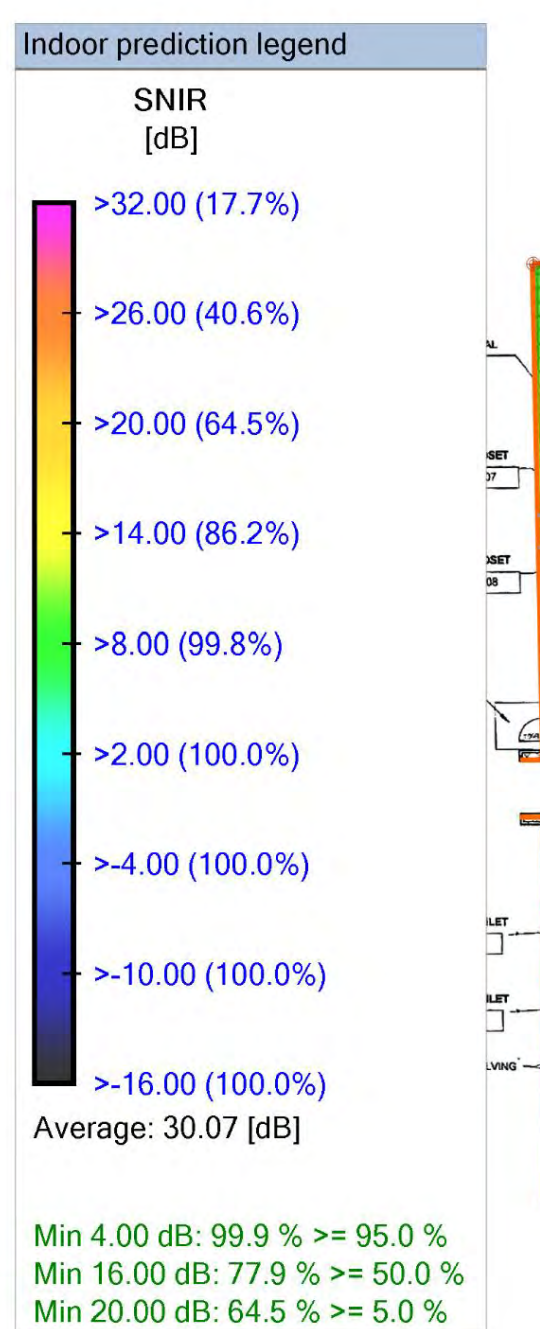
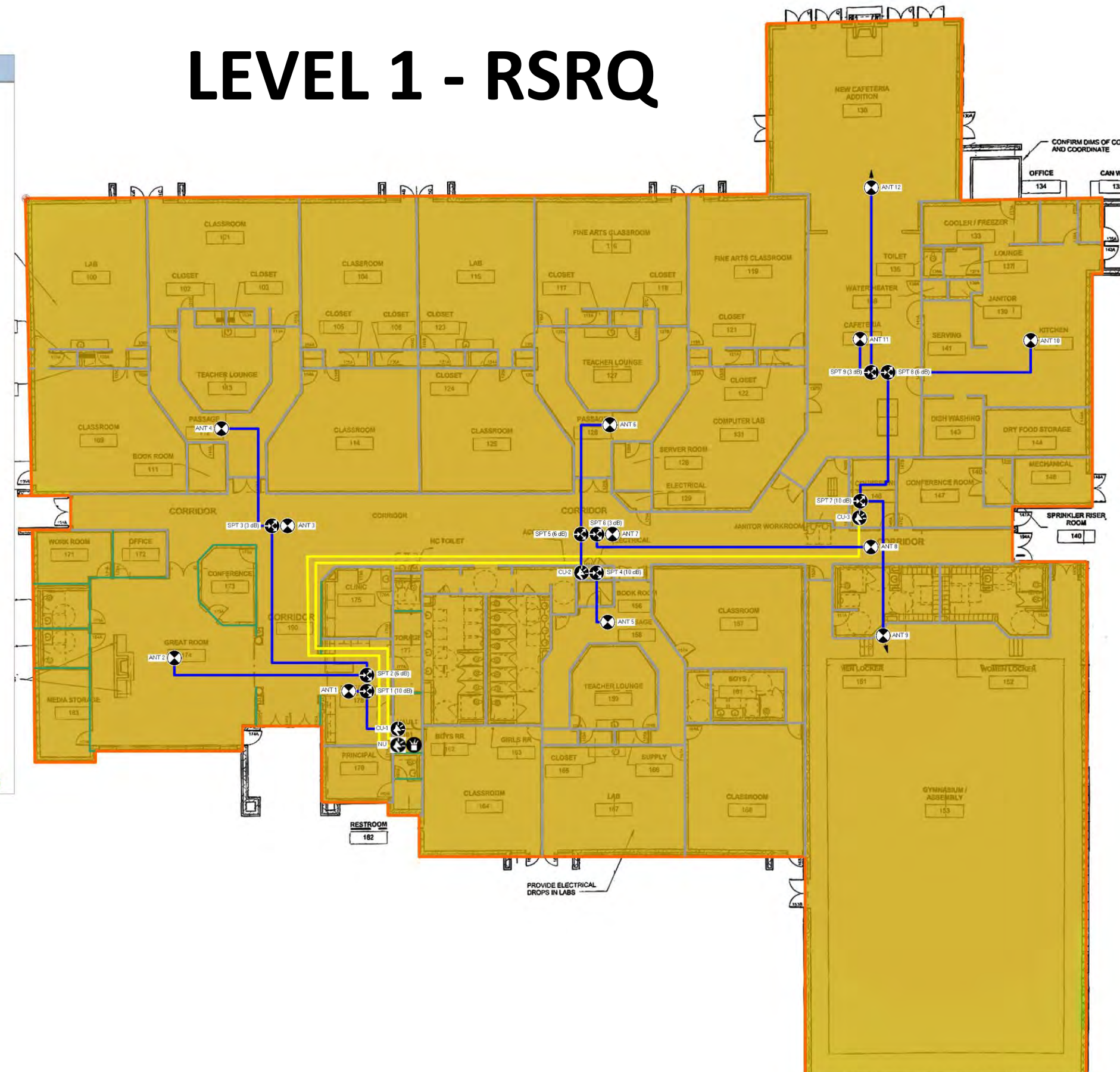
MIDDLE SCHOOL
UNITED STATES OF AMERICA



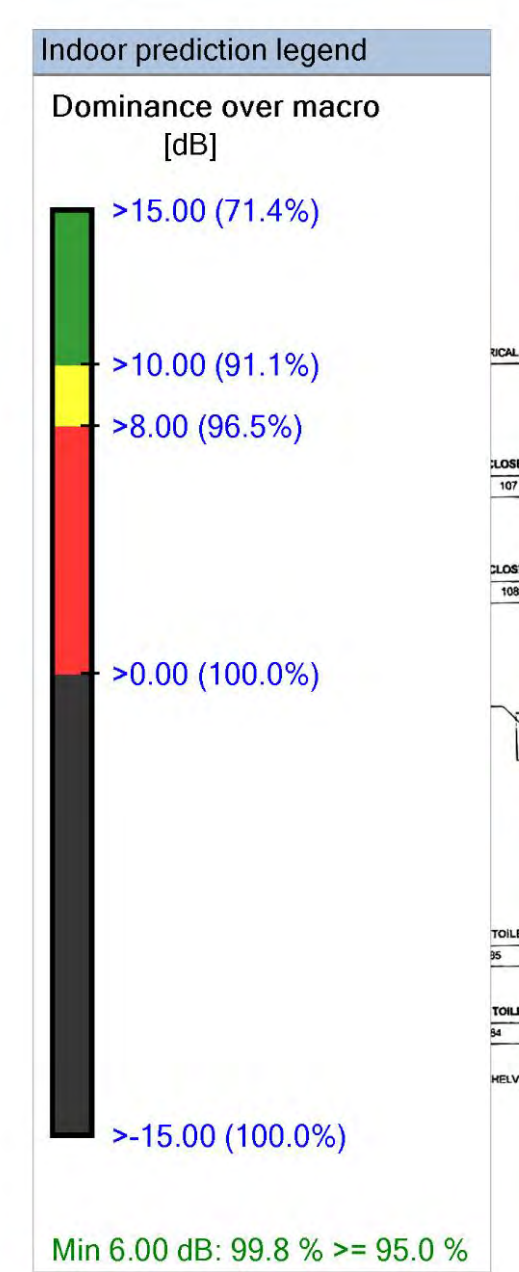
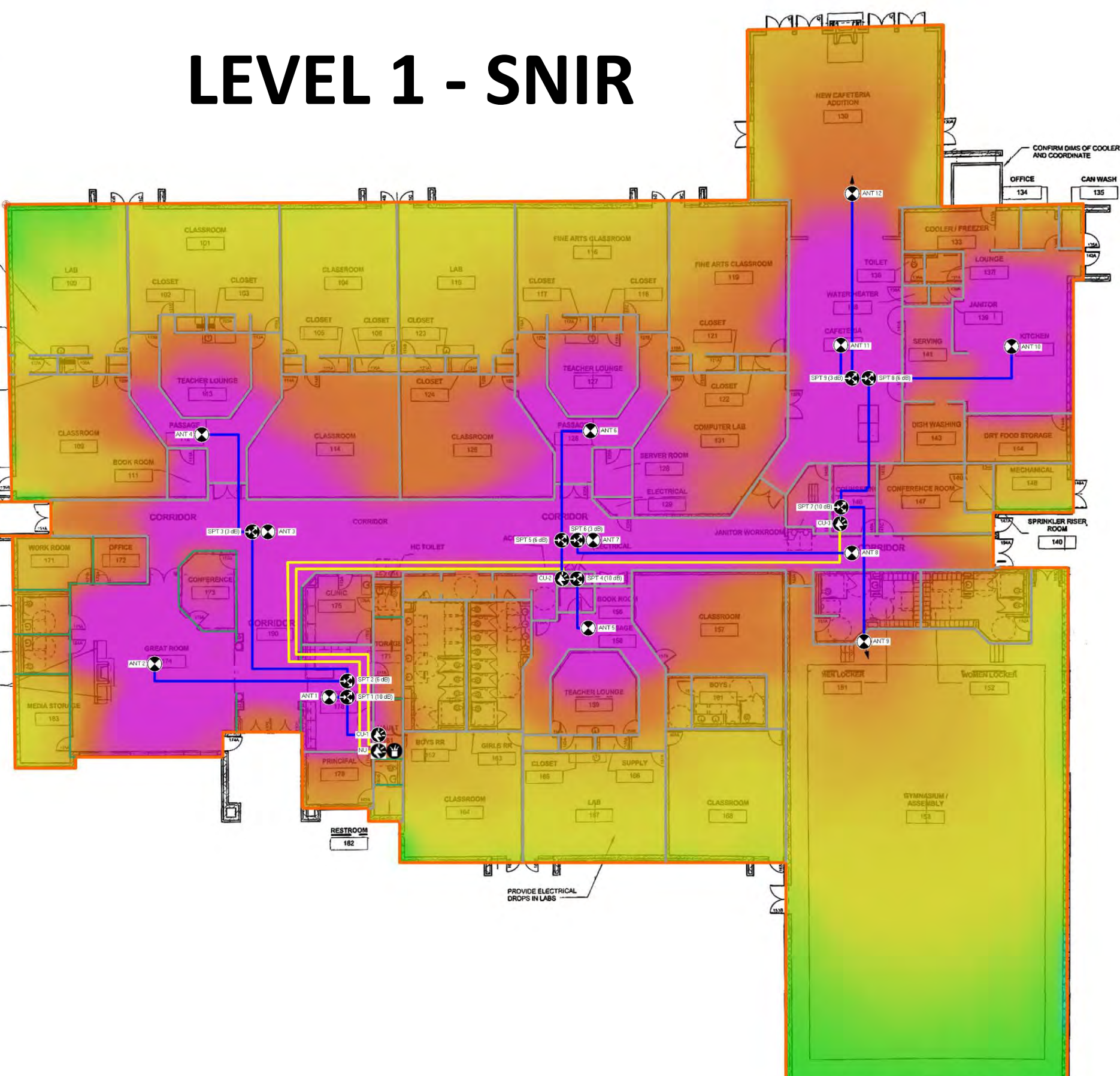
LEVEL 1 - RSRP



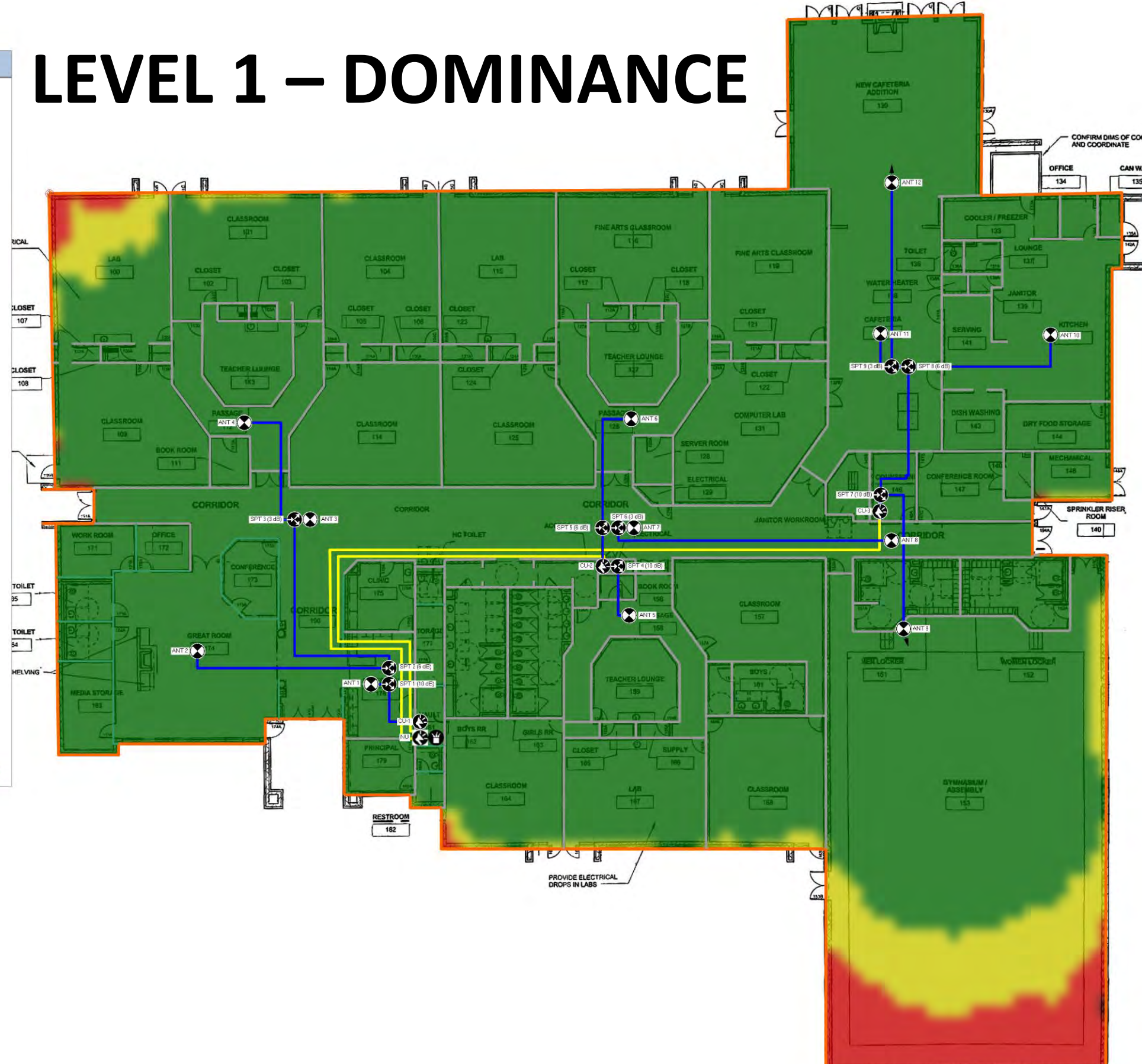
LEVEL 1 - RSRQ



LEVEL 1 - SNIR



LEVEL 1 - DOMINANCE



No.	Revision/Issue	Date

Date: 11/22/2023
Dwn By: NS
Chk By: WP
Size: 36" X 24"
Scale: NOT TO SCALE
Do Not Scale Drawing

HEATMAPS

Dwg: DAS 3 of 6 Rev:

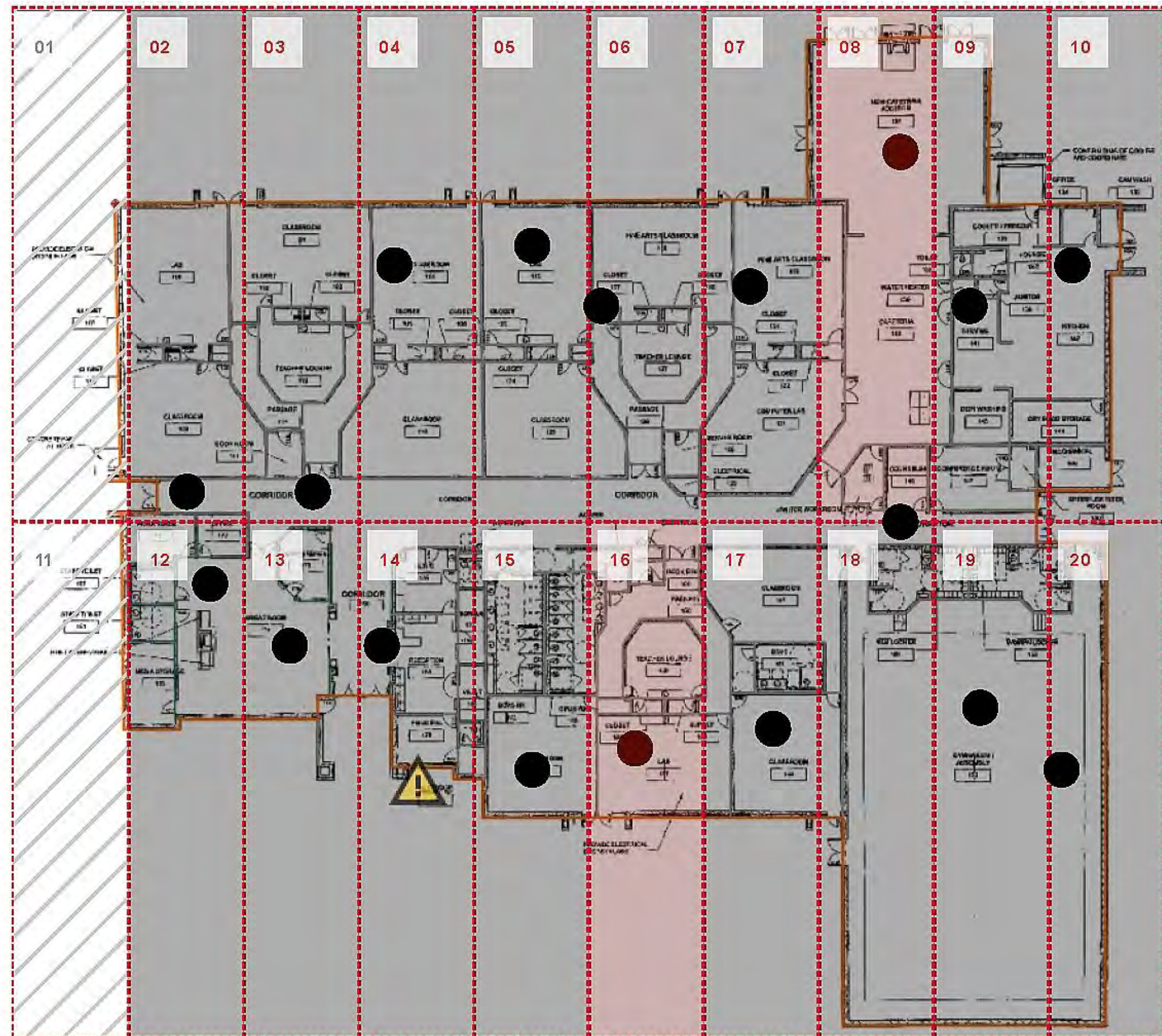
WALK TEST



606 S. Military Trail
Deerfield Beach
FL 33442

Tel: 1-800-940-0944
Fax: 1-954-360-0986

BEFORE

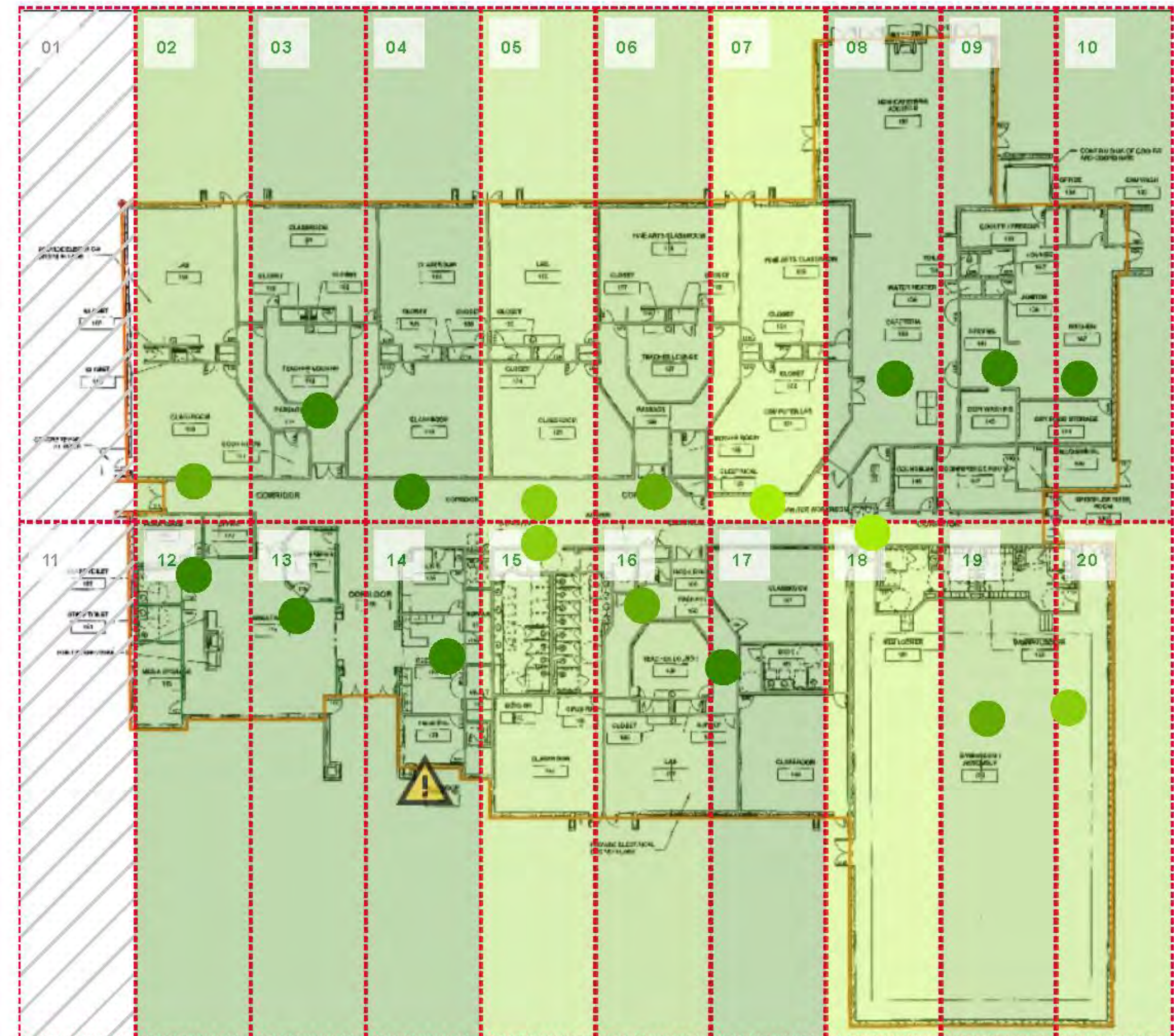


Signal Strength Legend

FirstNet/Cellular

- > -75 dBm
- > -80 dBm
- > -85 dBm
- > -90 dBm
- > -95 dBm
- > -100 dBm
- > -105 dBm
- > -110 dBm
- > -115 dBm
- > -120 dBm
- > -125 dBm
- > -130 dBm
- No Data
- Disabled
- ⚠ Critical

AFTER



MIDDLE SCHOOL
UNITED STATES OF AMERICA

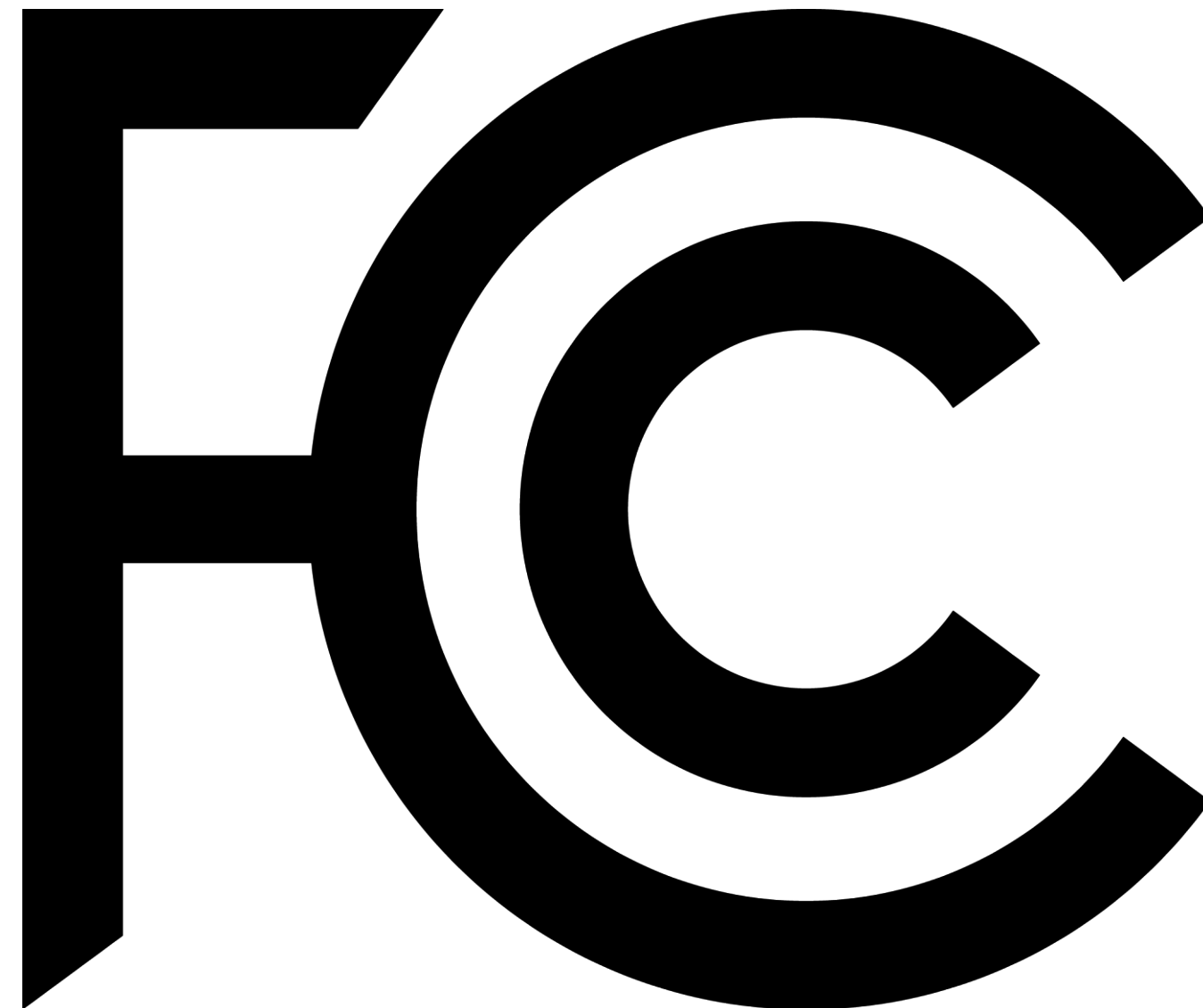
No.	Revision/Issue	Date

Date: 11/22/2023
Dwn By: NS
Chk By: WP
Size: 36" X 24"
Scale: NOT TO SCALE
Do Not Scale Drawing

WALK TEST

Dwg: DAS 4 of 6 Rev:

CERTIFICATION



606 S. Military Trail
Deerfield Beach
FL 33442

Tel: 1-800-940-0944
Fax: 1-954-360-0986

MIDDLE SCHOOL
UNITED STATES OF AMERICA

No.	Revision/Issue	Date

Date: 11/22/2023
Dwn By: NS
Chk By: WP
Size: 36" X 24"
Scale: NOT TO SCALE
Do Not Scale Drawing

CERTIFICATION

Dwg:	DAS 5 of 6	Rev:	
------	------------	------	--

Note Riser Diagram

It is a comprehensive overview of the DAS solution, highlighting the technologies and frequencies to be implemented by major commercial carriers, as well as the equipment and materials to be used for this solution. This diagram is created using IBwave.

Note Floor Plans

It is a graphical representation of the location and distribution of equipment within the in-building structure.

Note Heat maps

Principal KPI for Commercial DAS (LTE/4G)

RSRP (Reference Signal Receive Power): indicates the average power of the reference signal received at the antenna of the device.

RSRQ (Reference Signal Received Quality): indicates the quality of the received pilot signals from the current base station.

SINR (Signal-to-Interference-plus-Noise Ratio): It represents the relationship between the desired signal, interference, and noise in a transmission environment.

Dominance over Macro: Represents the dominance of the signal produced by the DAS over the organic signal coming from the outside."

Note Walk Test

These are signal measurement tests conducted in the field to make a comparison before and after the implementation of the DAS. The tests were performed using the 'COMPASS XR' scanner. Before installation, no commercial signal (Black/Red) was detected, and subsequently, a satisfactory signal (Green) was obtained.